

Paper Reference 1MU0/03
Pearson Edexcel
Level 1/Level 2 GCSE (9–1)

Music
COMPONENT 3: Appraising

Data Booklet

In the boxes below, write your name, centre number and candidate number.

Surname					
Other names					
Centre Number					
Candidate Number					

INSTRUCTIONS

There may be spare copies of some data sheets in case you need them.

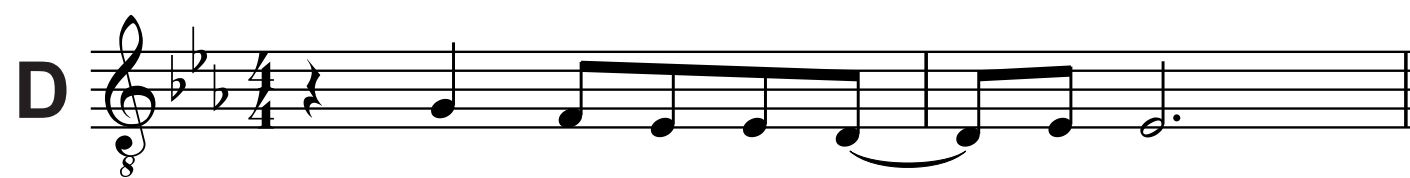
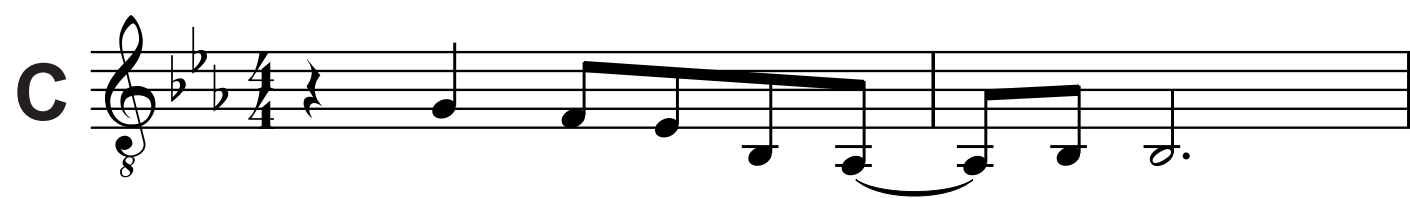
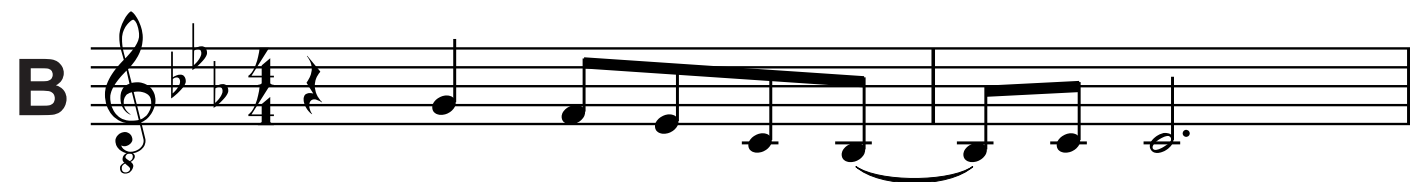
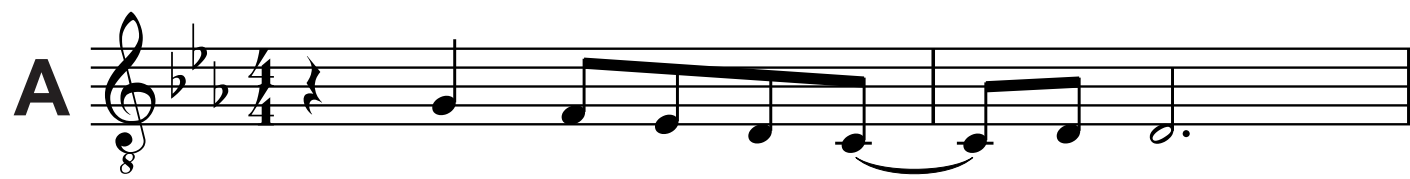
THIS DATA BOOKLET *MUST* BE RETURNED WITH THE QUESTION PAPER AT THE END OF THE EXAMINATION.

Contents

Page

4	Question 4(b)
5	Question 6(c)
6	Question 6(c) (Spare copy)
7	Question 7
8	Question 7 (Spare copy)
9	Manuscript paper
10	Manuscript paper (Spare copy)
11	Question 8
12	Question 8(c)

Question 4(b)



Question 6(c)

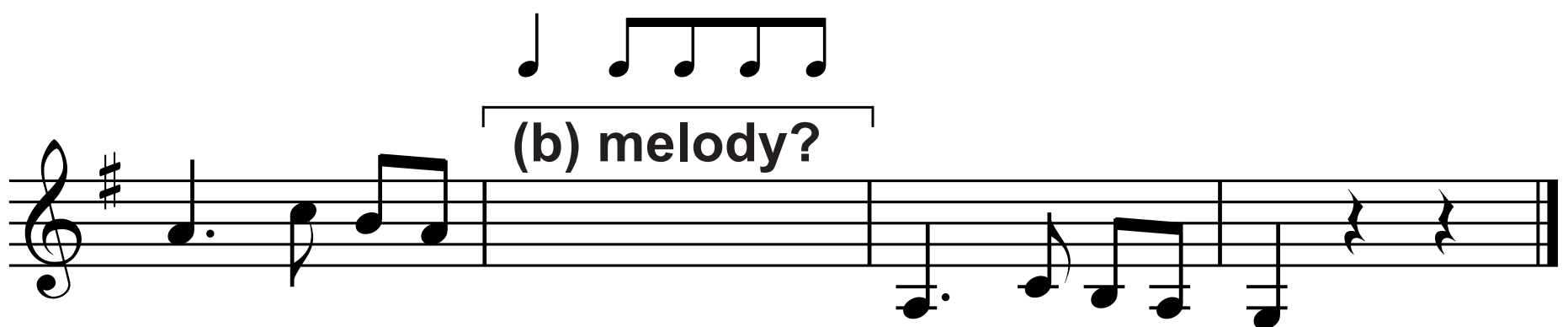
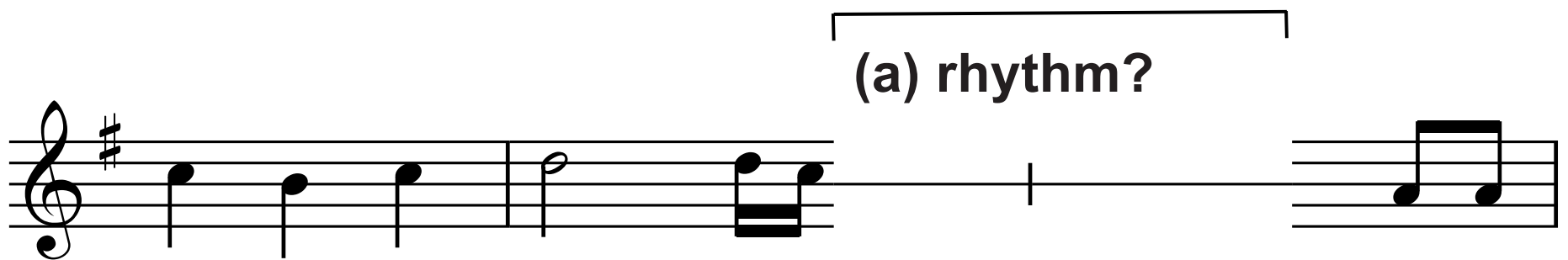
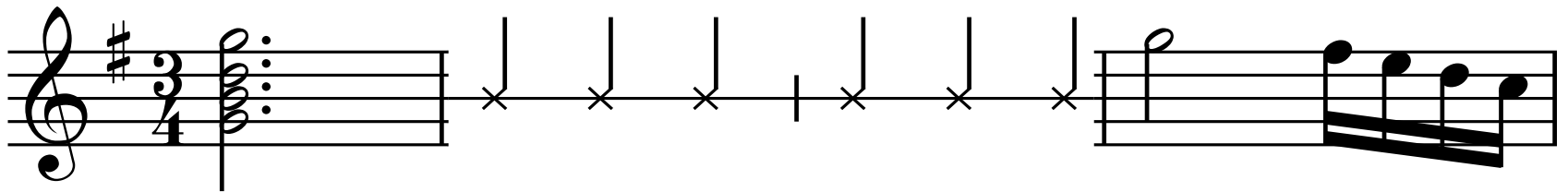
Statement	true	false
Extract A ends in the tonic key	<input type="checkbox"/>	<input type="checkbox"/>
Extract A ends with a perfect cadence	<input type="checkbox"/>	<input type="checkbox"/>
Extract A ends with triplets in the vocal melody	<input type="checkbox"/>	<input type="checkbox"/>

Question 6(c)

Statement	true	false
Extract A ends in the tonic key	<input type="checkbox"/>	<input type="checkbox"/>
Extract A ends with a perfect cadence	<input type="checkbox"/>	<input type="checkbox"/>
Extract A ends with triplets in the vocal melody	<input type="checkbox"/>	<input type="checkbox"/>

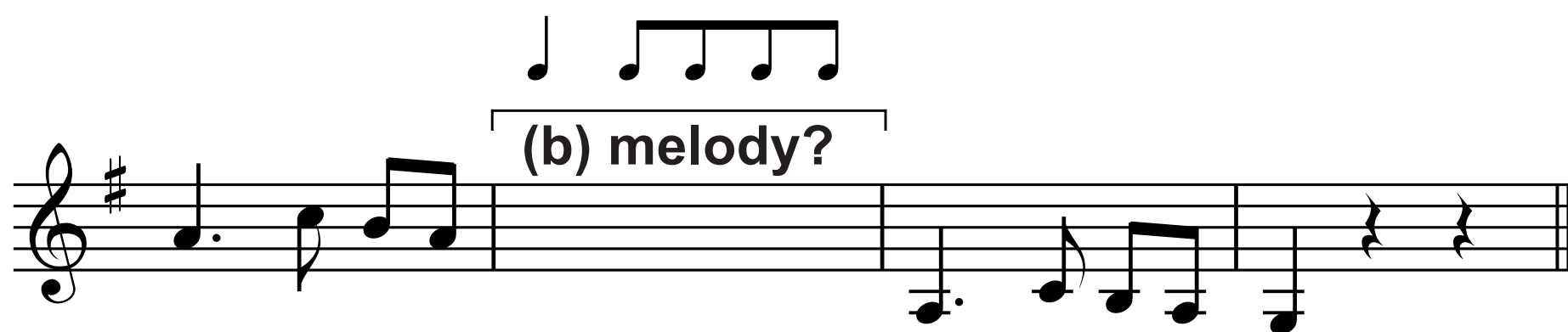
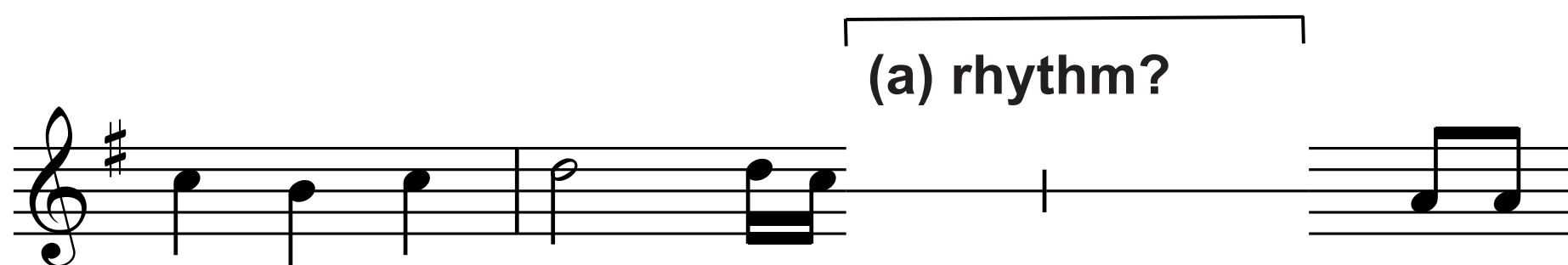
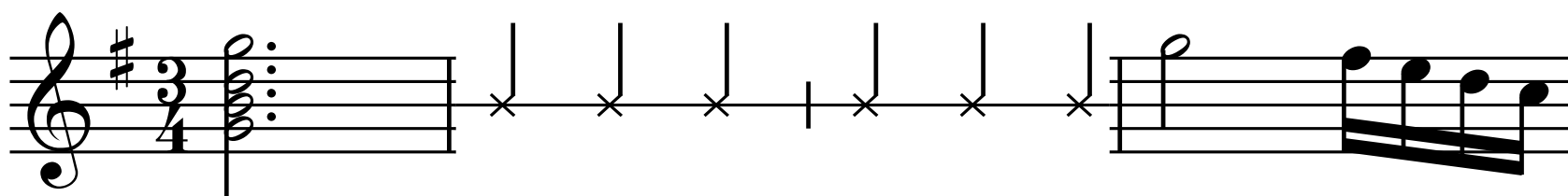
Question 7

Moderato



Question 7

Moderato



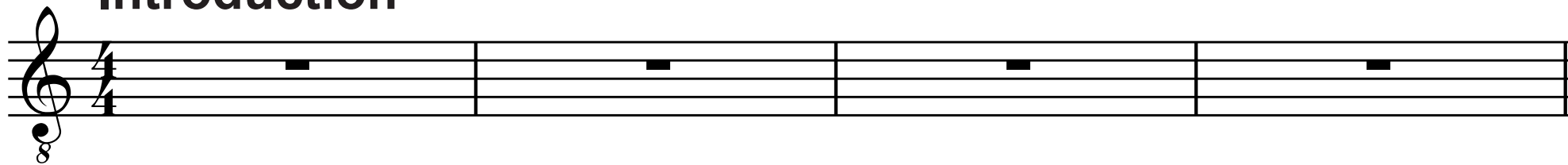
Manuscript paper

Manuscript paper

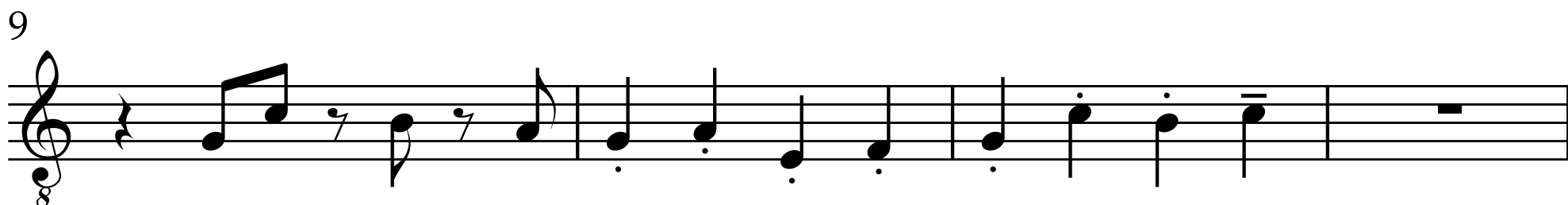
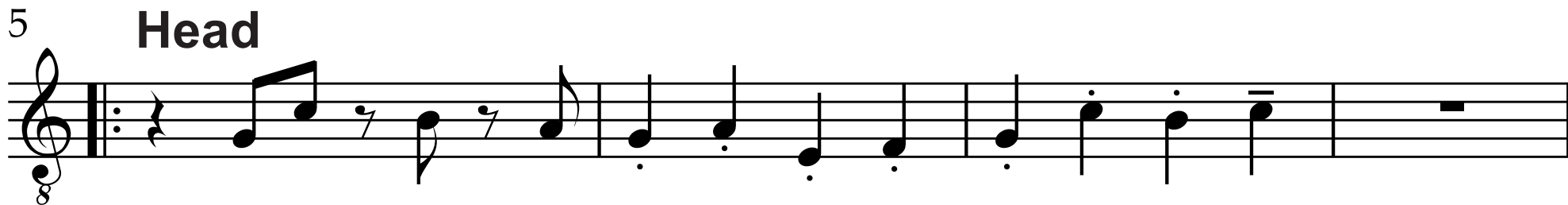
Question 8

(a) describe hi-hat part?

Introduction

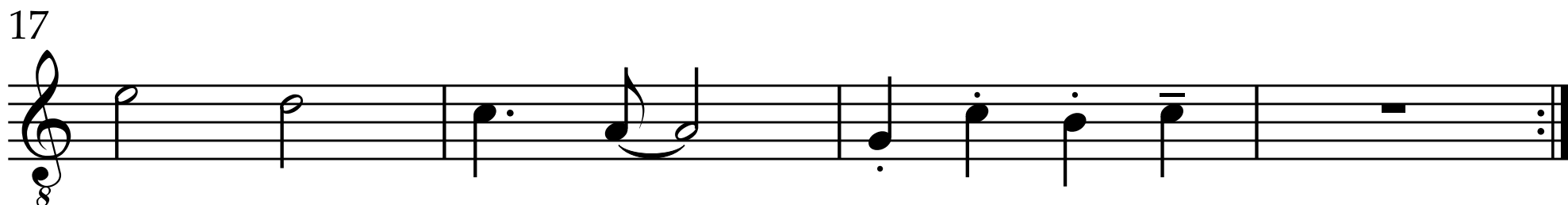
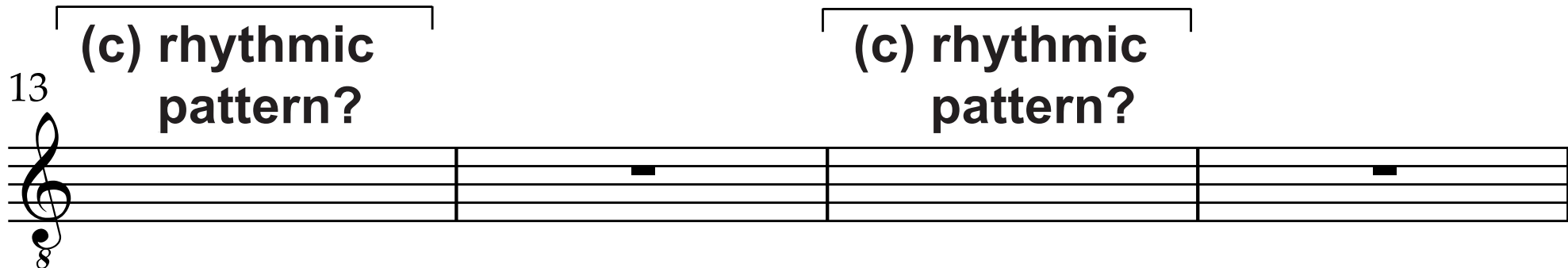


Head

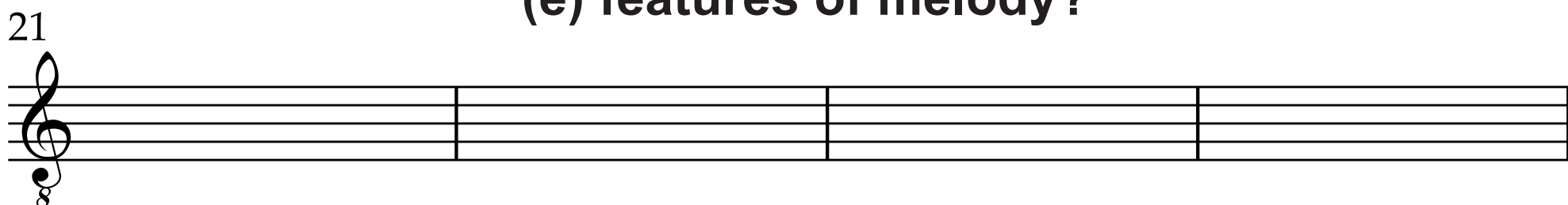


(c) rhythmic pattern?

(c) rhythmic pattern?




(e) features of melody?




Question 8(c)


A



B



C



D

